

BAC-002 Series Zigbee Thermostat User Guide



For Fan Coil Unit

Welcome

Thank you for your purchase. Your new thermostat will provide uniform and comfortable temperature control throughout every room in your property. We bring together technology, craftsmanship and the highest quality materials to provide you with a safe, reliable product combined with sleek, contemporary design.

Please read this installation/programming manual for comprehensive instructions on installing and operating your thermostat. Please also ensure a suitably qualified person installs your thermostat and

In the box you will find

Thermostat	1pc	Screws	2pc
User Guide	1pc	Wall plate	1pc
QC Passed	1pc		

ABOUT YOUR THERMOSTATS

BAC-002 series Modern Round Touch Screen Room Thermostats are designed to on/off control the fans and valves in air conditioner applications via comparison of the room temperature and setting temp. as reaching the aim of comfort and saving energy.

MODEL DEFINITION

A : Two pipe; Control Fan Coil Unit and Two Wired Motorized Valve
 M : Two pipe; Control Fan Coil Unit and 0-10V Motorized Valve
 E : Four pipe; Control Fan Coil Unit and Two Wired Heat Valve and Two Wired Cool Valve.
 N : Modbus RTU communication ZB : Zigbee
 W : Wifi connection
 K : Keycard T : Clock
 W2 : Window P : Programmable
 E : External Sensor
For example: BAC-002ALW

FEATURES

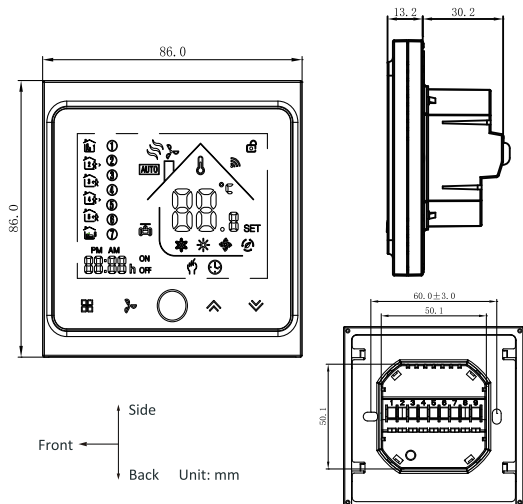
On Appearance

- 86mm hidden box and european 60mm round box is suitable.
- White, black or gold housing creates your colorful life.
- White backlight protect your eyes
- Touch buttons to make simple operation.
- Amazing Silver Frame opens your modern life.

On Functionality

- Powerful functions are available such as Modbus/WIFI etc.,
- 0.5°C Accuracy keeps temperature within the level you set.
- Data memory when power is off.
- 5+2 six periods programmable maximize comfort and economy.
- Create thermostat group to centrally control.
- Support Device Sharing.
- All setting languages synchronize your time zone, address and language
- No limit to add room Support Smart Scene.

DIMENSION



TECHNICAL DATA

Power Supply: 95 ~ 240 VAC, 50 ~ 60HZ
 Fan Relay Amps Resistance: 5A; Inductive: 3A
 Valve Relay Amps Resistance: 3A; Inductive: 1A
 Sensor: NTC3950, 10K
 Accuracy: ±0.5 °C
 Set Temp. Range: 5 -35 °C
 Display Temp. Range: 5 ~ 99 °C
 Ambient Temp.: 0 ~ 45 °C
 Ambient Humidity: 5 ~ 95 % RH (Non Condensing)
 Storage Temp.: -5 ~ 45 °C
 Power Consumption: <1.5W
 Timing Error: < 1%
 Shell Material: PC +ABS (Fireproof)
 Installation Box: 86 * 86mm Square or European 60mm Round Box
 Wire Terminals: Wire 2 x 1.5 mm² or 1 x 2.5 mm²
 Protection Class: IP20
 Buttons: Capacitive Touch Buttons

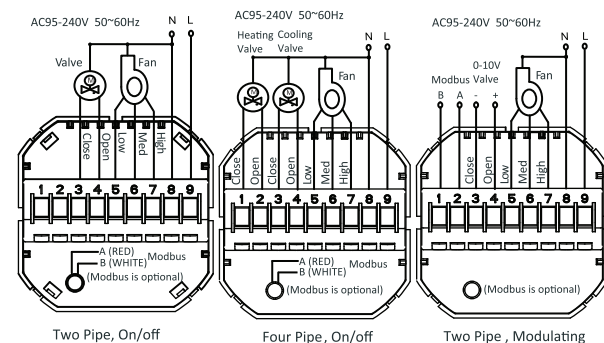
BEFORE WIRING AND INSTALLING...

- Read these instructions carefully. Failure to follow them could damage the product or cause a hazardous condition.
- Check the ratings given in the instructions and on the product to make sure the product is suitable for your application.
- Installer must be a trained, experienced service technician.
- After installation is complete, check out product operation as provided in these instructions.



Electrical Shock or Equipment Damage Hazard. Can shock individuals or short equipment circuitry. Disconnect power supply before installation.

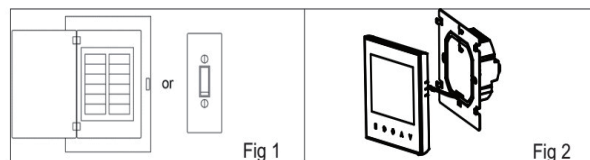
WIRING



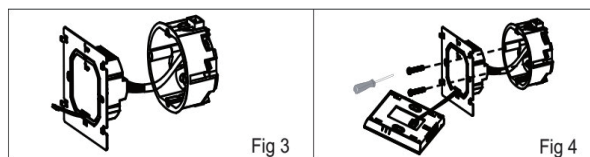
INSTALLATION

Your thermostat is suitable for installation within a standard 86mm pattrass box or European 60mm pattrass box.

- Keep the electricity off. See Fig 1.
- Remove the mounting Plate by rotating the LCD part. See Fig 2.

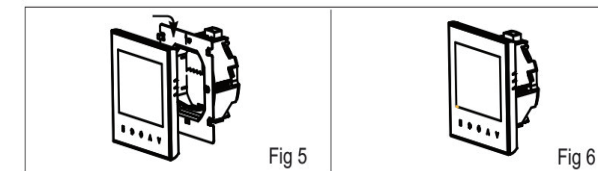


- Connect power supply, load into the appropriate terminals. (see "Wiring your thermostat" for details and Fig 3).
- Fix the mounting plate into the wall with screws in the box. See Fig 4.

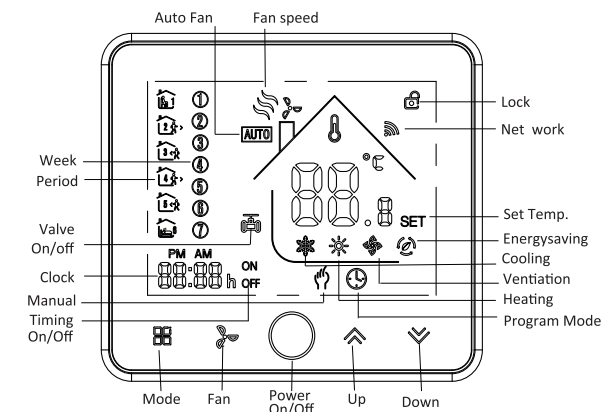


Step 5. Fasten body of thermostat and the mounting plate See Fig 5

Step 6. Installation complete. See Fig 6



HOME SCREEN QUICK REFERENCE



OPERATION

During Power On

- Power On/off:** Press to turn the thermostat on/off.

2. Manual & Programmable

Press and hold , will flash. Press to select manual and press to select weekly programmable.

3. Setting Temperature

In the mode of manual, press to set temperature. will display in the left corner of screen.

4. Locking Your Thermostat

Press and hold the for 5 seconds to lock/unlock your thermostat. In item 3 of high senior options, you can select full lock or half lock.

5. Selecting System Mode

Press to change the system mode HEATING, COOLING and VENTILATION. In the mode of VENTILATION, the valve is off but the fan runs.

6. Setting the Fan Speed

Press to select the fan speed AUTO, HIGH, MED, LOW.

7. Adjusting/Setting the Clock

Press and hold , will flash. Press to set minute, hour and weekday (1 = Monday, 2 = Tuesday etc.) by using the arrows, after 3 seconds the value will be confirmed automatically.

8. Adjusting the Weekly Programmable

Method one

Manually set a week of programming settings, specific operations are as follows:

Press to do the adjustment of weekly programmable. Then press to change the different items. Press to set the relative values.

Your thermostat provides six scheduled heating and cooling periods each day – three Comfort periods - 1, 3 & 5 (the temperature required when room is occupied) and three Economy periods – 2, 4 & 6 (the temperature required when room is unoccupied). You can set both the time and temperature for each of these six daily periods. Adjusting/setting the schedules can only be carried out when in program mode; Touch M (mode) to change between manual mode and programme mode. In manual mode, will show in the bottom left of the screen. Touch the icon for four times until the weekday schedule settings appear (1 2 3 4 5 will show along the top of the screen).

Use the and arrows to adjust the time for the 1st (Comfort) period Press the icon and use the and arrows to set the temp.

for the 1st period. Repeat this process for periods 2 – 6. Press the icon once more to enter the weekend schedule settings (6 & 7 will show along the top of the screen). Repeat the above process to set the weekend schedule. .Press once more to confirm and exit.

Default settings for program schedule

Time display	WEEKDAY(MONDAY-FRIDAY) (1 2 3 4 5 shows on scteen)		WEEKDAY(MONDAY-FRIDAY) (6 shows on scteen)		WEEKDAY(MONDAY-FRIDAY) (7shows on scteen)	
	TIME	TEMPERATURE	TIME	TEMPERATURE	TIME	TEMPERATURE
Period 1	6:00	20	6:00	24	6:00	19
Period 2	11:30	21	12:00	23	12:30	20
Period 3	13:30	22	14:30	22	14:30	20
Period 4	17:30	23	17:30	21	18:30	21

In the mode of programmable, set temp., time could not be adjusted.

Method Two

Use APP for one week of programming settings, please refer to the second page "**Programming your thermostat**"

About Zigbee

ZigBee CONNECTION

Before using your Zigbee thermostat for the first time, you must connect the Zigbee signal and settings through your smartphone or tablet. This will allow communication between your connected devices.

Step 1 Download your APP (Fig 1-1)



Fig 1-1



Fig 1-2 IOS



Fig 1-3 Android

For IOS devices, search for Smartlife in Apple Store and download. Alternatively ,scan the relevant QR code here (Fig 1-2).
For Android devices, search for Smartlife in Google Play and download. Alternatively,scan the relevant QR code(Fig 1-3).

Step 2 Register your account

Open your **Smartlife**, you will see an interface (Fig 2-1), if you have an account, you can log in directly. If you do not have an account, you need to register a new account.

Press to register a new account (Fig 2-1), you will receive a notification (Fig 2-2), Press **"Agree"** to enter the registration page (Fig 2-3), enter your mobile phone number, Press **"Get Verification Code"**, waiting for the verification code information. Enter the verification code and confirm (Fig 2-4) to complete the registration.



Fig 3-1-2

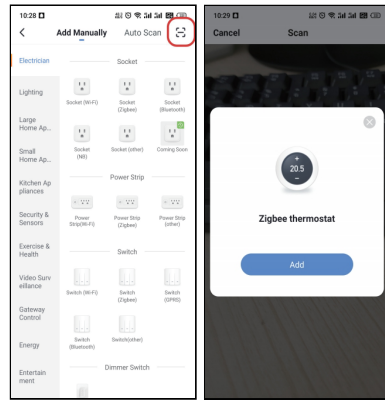


Fig 3-1-1

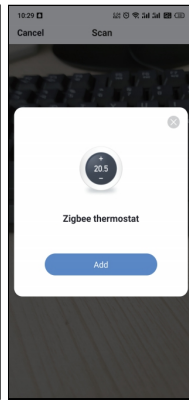


Fig 3-1-3

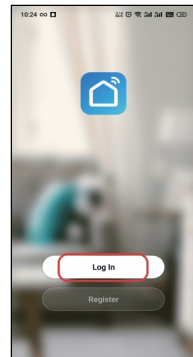


Fig 2-1

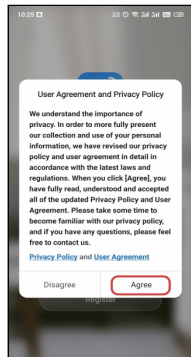


Fig 2-2

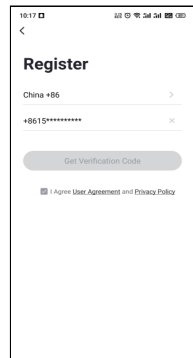


Fig 2-3

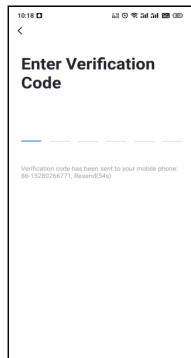


Fig 2-4

Step 3 Connect your Zigbee signal

If your phone is already connected to ZigBee, please ignore this step. If your phone is connected to ZigBee for the first time, please check the following steps:

First, keep your ZigBee gateway powered on. Long press the button to confirm that the red light flashes quickly and the blue light stays on.

Method one:

Press the plus sign "+" in the upper right corner of the APP (Fig 3-1). Press the plus sign "⊕" in the upper right corner of the APP (Fig 3-1-1), scan the QR code below (Fig 3-1-2), and the interface for adding a thermostat will pop up (Figure 3-1-3), Press **"Add"**.

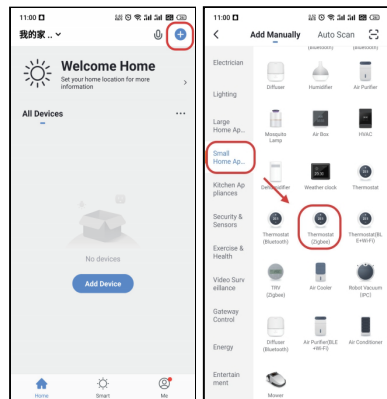


Fig 3-1

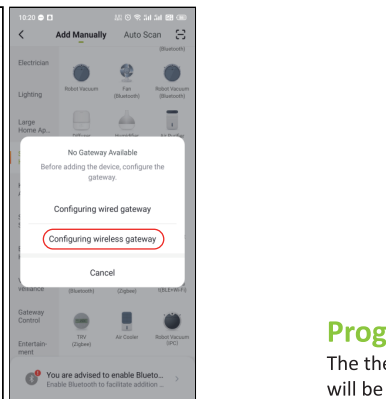


Fig 3-2

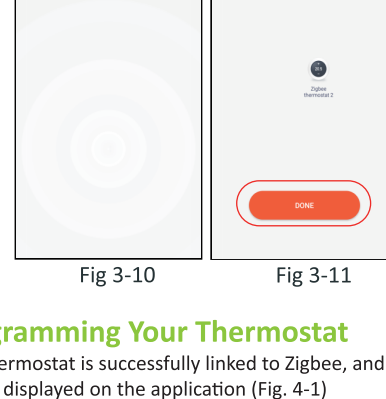


Fig 3-3

Method Two:

Press the plus sign "+" in the upper right corner of the APP (Fig 3-1), Choose **"Small Home Appliances"** (Fig 3-2), Select the **Thermostat (ZigBee)** (Fig 3-2), Choose to **"Configuring wireless gateway"** (Fig. 3-3), Press **"Confirm indicator rapidly blink"** –**"Next"**(Fig 3-4), Please allow **"Settings"** (Fig 3-5),

Enter the wifi password and you will enter the connection gateway (Fig 3-6) to complete the gateway pairing (Fig 3-7). Press **"Home"** on the APP, find **"Zigbee Wireless Gateway"**, Press it, and enter to add ZigBee device: Press **"Add subdevice"**.

On your Thermostat

When the thermostat is off, press and hold the for 8 seconds, the screen will be bright, you will see the screen and the icon will flash quickly. Press APP **"LED already blink"** (Fig 3-8), the APP will search for the thermostat **"Discovering nearby ZigBee devices"** (Fig 3-9), Press **"Done"** (Fig 3-10), the APP will **"Add successfully"** will be displayed, you can modify the thermostat name (Fig 3-11).

Note: The first connection is successful, you need to start the thermostat; APP control thermostat will have a 2-3 second delay.

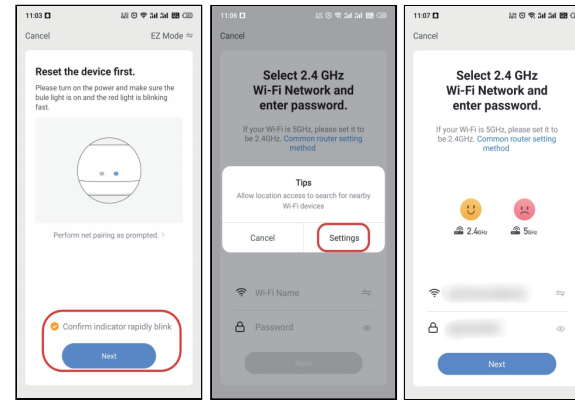


Fig 3-4

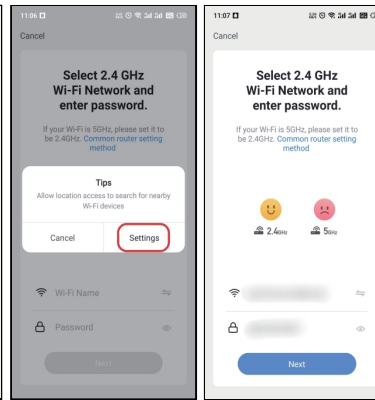


Fig 3-5

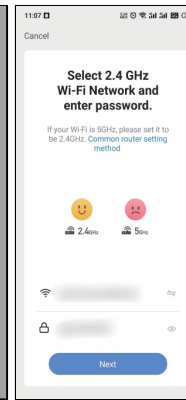


Fig 3-6

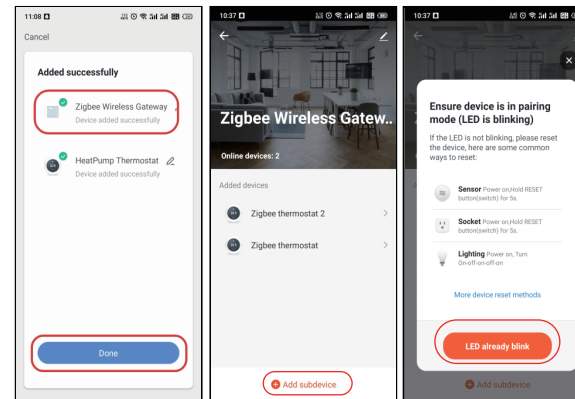


Fig 3-7

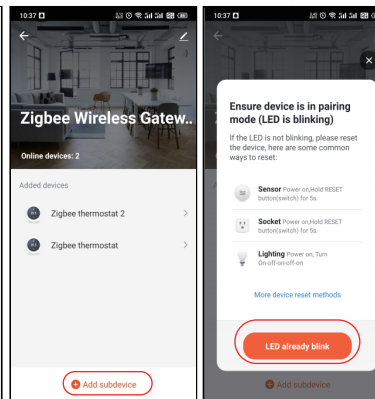


Fig 3-8

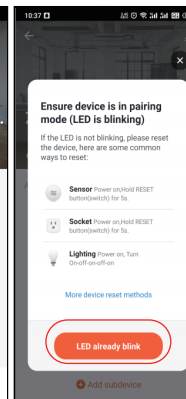


Fig 3-9

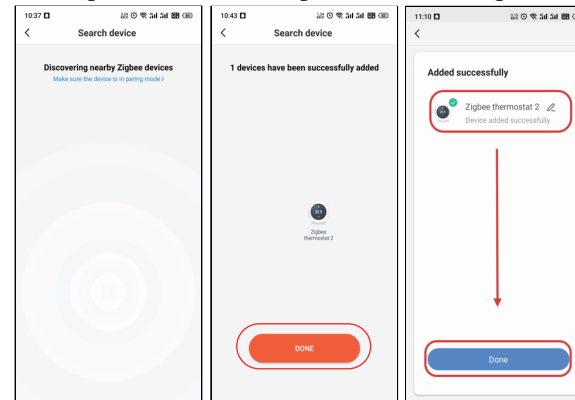


Fig 3-10

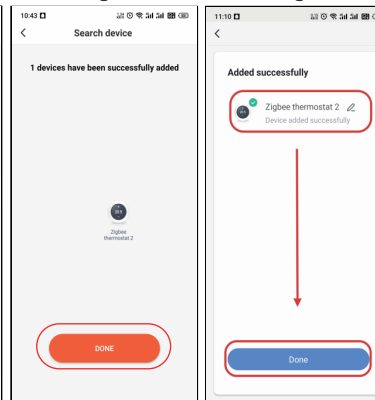


Fig 3-11

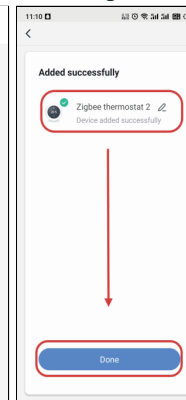


Fig 3-12

Programming Your Thermostat

The thermostat is successfully linked to Zigbee, and the thermostat set by the user will be displayed on the application (Fig. 4-1)
Press the corresponding button below to set up your thermostat.

ON/OFF key. When there is a digital display on the screen, it means that the thermostat is on; when there is no digital display on the screen, it means that the thermostat is off.

is cooling, is heating, and is ventilation.

Fan speed setting, press this icon, you can select auto, low, med, high speed.

Settings, press the settings in the **"Child lock"** **"ECO mode"** **"Temperature calibration"** **"Set temperature ceiling"** **"Dead zone temperature"** and other settings.

Note: ECO mode

- In this mode, the thermostat will control the temperature according to the programmed time period and temperature.
- In this mode, you can manually set the temperature of the thermostat. In the next time period, the thermostat will control the temperature according to the preset time period and temperature.

In programming mode, Press the in the upper right corner of the APP (Fig. 4-2) to enter a week of programming settings (Fig. 4-3)

*Weekly program, one week time preset, preset temperature setting for each time period, weekly program is 5+1+1 mode.

*You can set 4 time periods - time and temp. (Fig. 4-4).

*When your week of programming completes the settings, Press **"Save"** in the upper right corner, the application will transfer the programming data to the thermostat, and confirm that the plan has been saved.

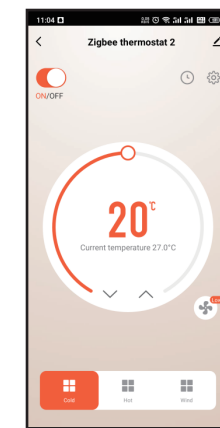


Fig 4-1

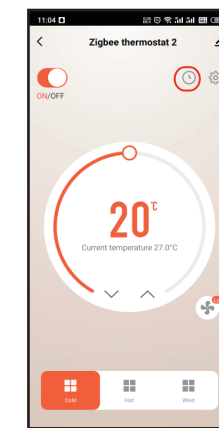


Fig 4-2



Fig 4-3

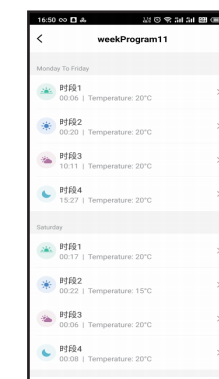


Fig 4-4

How to Create Group

Press icon (Fig. 5-1), and then press **"Create Group"**(Fig. 5-2). Select all the rooms you want and confirm. The person who created the group can control all rooms at the same time. Note In addition to creating a group, you can also modify the device name on this menu page, **Share device**, and **Device Information**. (Fig. 5-3).

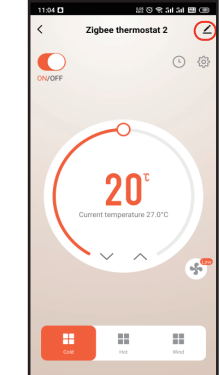


Fig 5-1

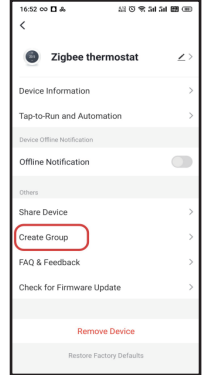


Fig 5-2

How to share equipment with family?

Press icon (Fig. 5-1), then press **"Share Device"**(Fig. 6-1)to **"Add Home Member"** (Fig. 6-2), and then add the account you want to share. You can see the shared account you sent and the device you shared on the sharing page. If you are a shared person, you don't need to do anything.

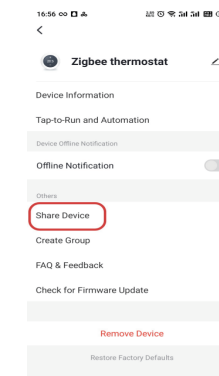


Fig 6-1

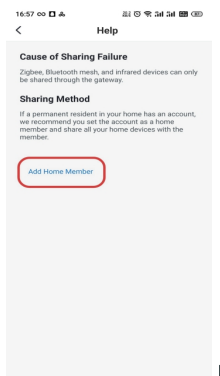


Fig 6-2

NOTE: The room sound could be turned on/off in PROFILE-SETTING-SOUND. The sound is matched with the default of your system.

SIMPLE EXCEPTION HANDLING

No.	Phenomenons	Handling
1	Power is on but without display.	* Check if the terminals between LCD panel and Power Unit Box is loosen.
2	Without output but display works.	* Use a new LCD panel or new Power Unit Box to replace the old one.
3	Room Temp. Is a little different from the actual.	* Do temperature calibration in item 1 of high senior options

SERVICE

Your thermostat carries an 24 months warranty from date of purchase. Service outwith the warranty period may incur a charge. More detail please contact with us directly.